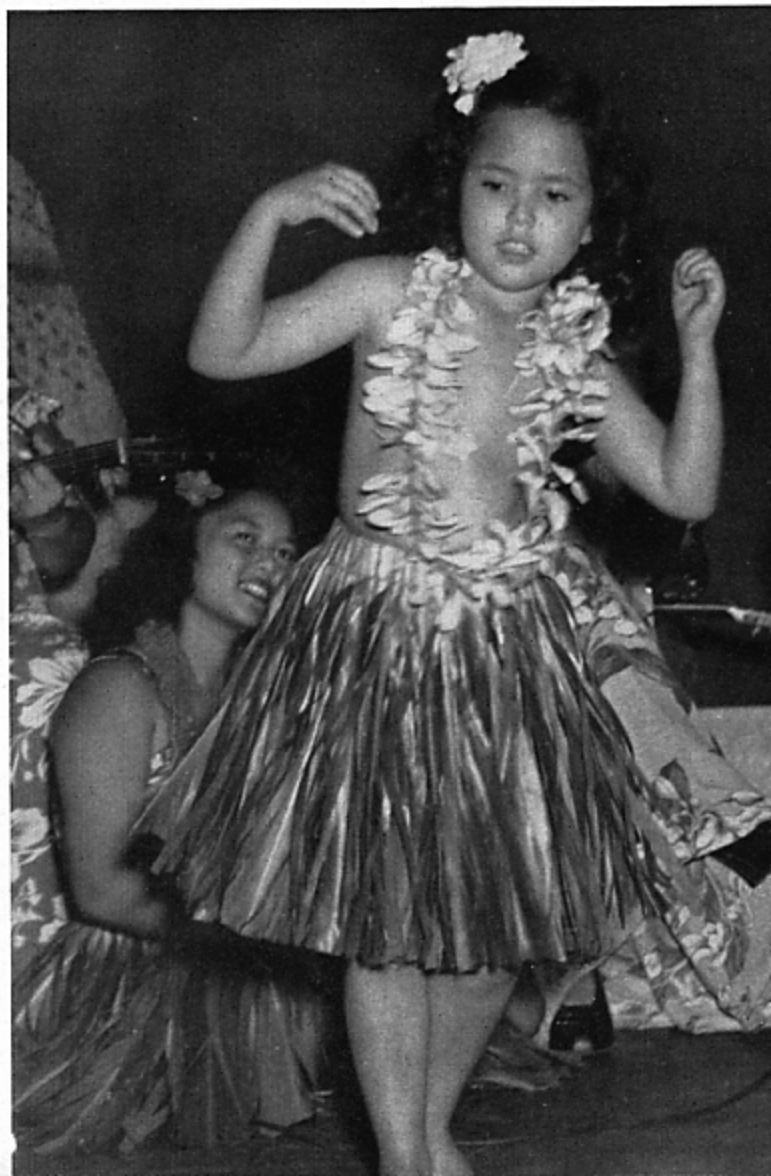




The Amelia Guerrero Show was a USO offering of Hawaiian native songs and dances . . . The petite lady on the right below was the daughter of one of the Hawaiian troupers . . . Marie Dickerson is the hot dish of colored jive, below left, and an outstanding entertainer.





Special Service Unit No. 166 was strictly Stateside . . . Veterans Grace and Will Ahern have our William Broderick in the middle during one of their comedy skits . . . Below are scenes from the USO show, "Out of This World" . . . Mushy Robinson and his colleague are on the deck at Marie Dickerson's feet . . . With MC Bud Shields and "Little Natalie" cheering them on from backstage . . . "Bee" does her Leopard Dance, with a broken shoulder strap . . . Hummmmm.





"OUT OF THE FRYING PAN" WAS PRODUCED AND PRESENTED ON THE "HILL" BY THE TALENTED HONOLULU COMMUNITY THEATRE PLAYERS

"DOUGHGIRLS" WAS ALSO A HONOLULU COMMUNITY THEATRE PRODUCTION. BOTH OF THE LEGITIMATE PLAYS WERE WELL RECEIVED, AND WERE THE ONLY TWO EVER PRESENTED AT OUR THEATRE

TOM BOYD, WITH HIS BACK TO THE CAMERA, AND HIS WESTERN HILL-BILLIES TOURED THE SERVICEMAN'S CAMP CIRCUIT ADVERTISING THE SHOWING OF HIS RODEO AT THE HONOLULU STADIUM





THE NATIVE HULA DANCERS CROWD TO THE WINDOW OF THEIR TRAILER WHEN THE SEABEE WOLF CALL FILLS THE AIR

THE BEST SHOW EVER PRESENTED ON OAHU WAS "PUDDLE JUMPERS," HEADED BY MOVIE COMEDIAN ALLEN JENKINS AND BARITONE EDDIE ULRIC

THESE PRETTY CHINESE GIRLS ARE IN THE COSTUMES OF THEIR ANCESTORS AT THE CHINESE FESTIVAL HELD IN THE USO VICTORY CLUB IN HONOLULU

THE MINUTE-MEN PLAYERS SHONE ON AMATEUR NIGHT. "CB'S ON PARADE" WAS AN ALL-SEABEE SHOW WITH VETERAN SHOWMAN SONNY DUVAL THE SPARK-PLUG MC AT THE MIKE

OUR OWN WALTER FRISBY WAS IN HIS GLORY, BUT NOT HIS ELEMENT, DEPICTING THE TYPICAL SEABEE



PEARL HARBOR

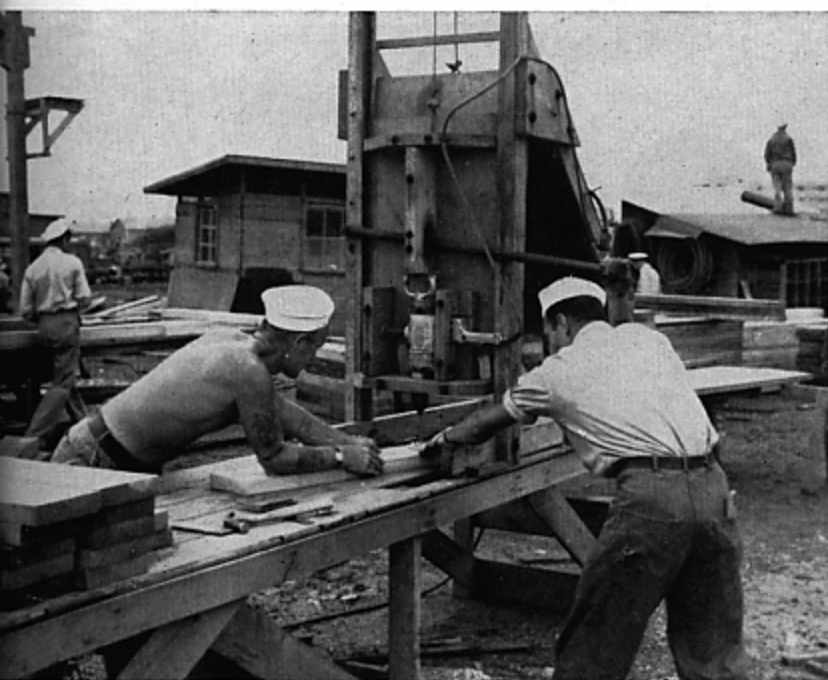


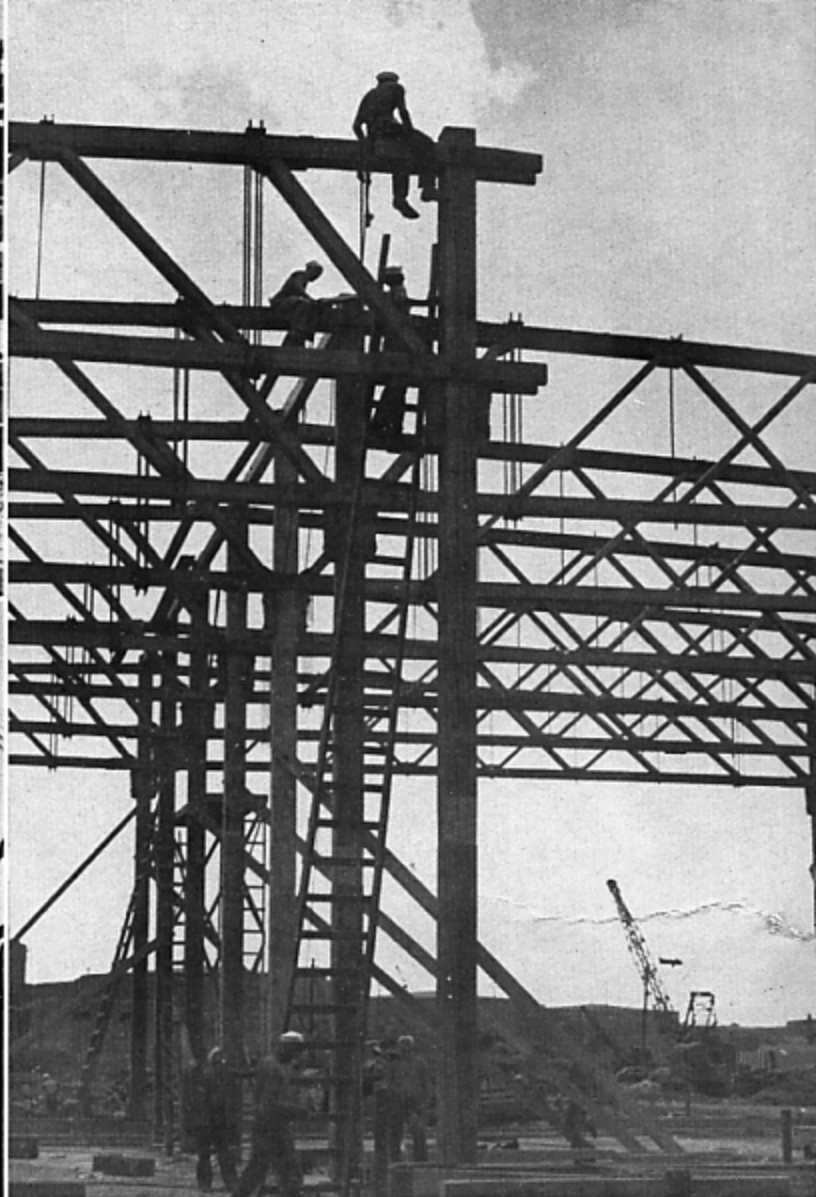
We arrived at Pearl Harbor on March 29, 1943, prepared to enter into the construction program of America's most important Pacific Naval Base. Almost from the first days we were engaged in work of paramount importance, and our outstanding assignment was the construction of complete repair and servicing facilities for submarines at the Pearl Harbor Submarine Base. The work was urgent and carried a high priority. Major buildings on this single project consisted of a large machine shop, shipfitters shop, pattern shop, foundry and several substations. Our electricians showed their skill when they made many changes in the electrical system, and installed numerous reinforced concrete duct lines and pieces of machinery and equipment. To relieve the critical shortage of housing facilities

for men and officers, we constructed many barracks, BOQ mess halls and galleys. Landing craft and camp facilities at Waipio Point and the advance base reshipment depot at Iroquois Point had AA-1 priorities and included the erection of many quonset huts, shops and storehouses. We built huge warehouses, roads, an asphalt plant; we dismantled and re-erected massive oil storage tanks; in fact we engaged in every phase of construction in the books. Our men showed great ingenuity and resourcefulness at all times and gained the respect of other outfits and high ranking Navy officials. The many letters of commendation we received were warranted and appreciated. We compiled an enviable record at Pearl Harbor of which we can be justly proud.

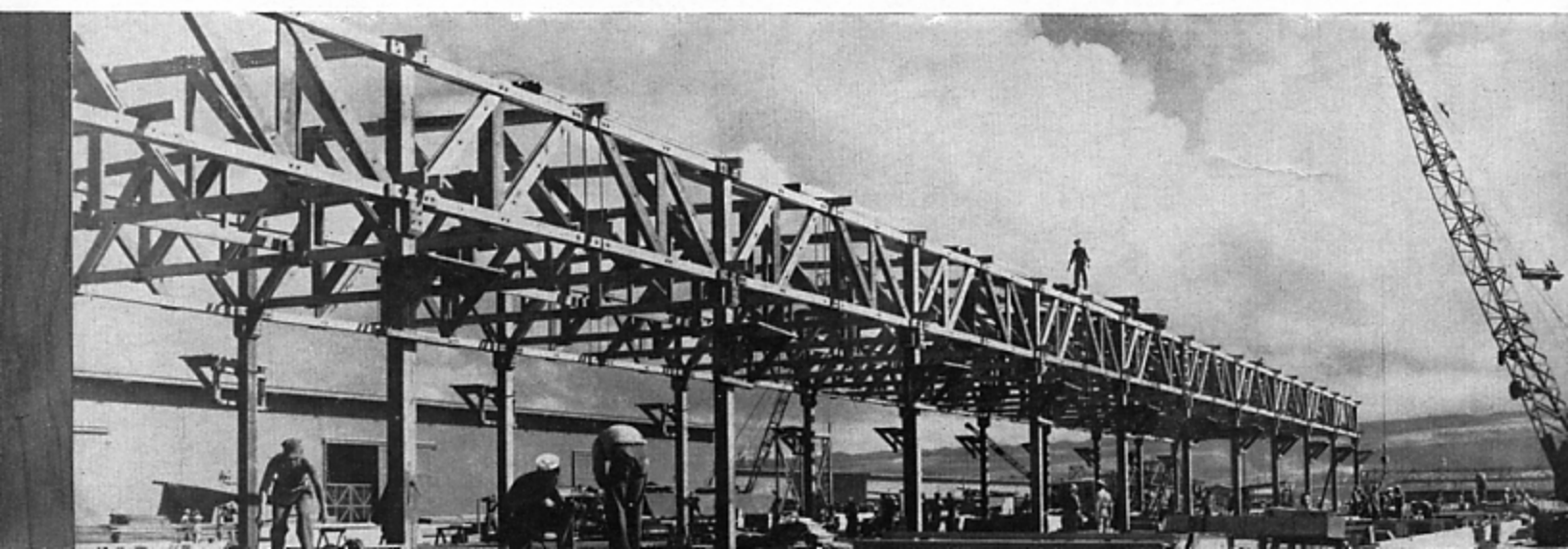


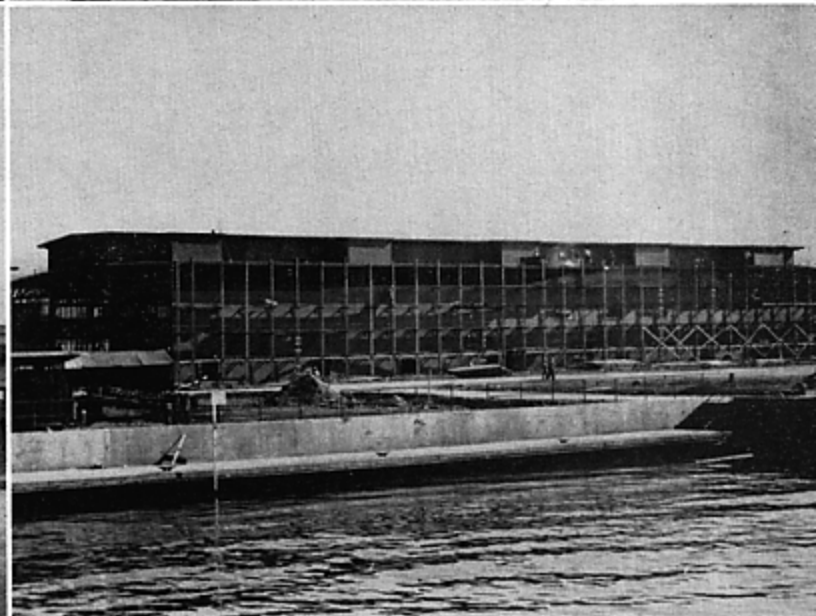
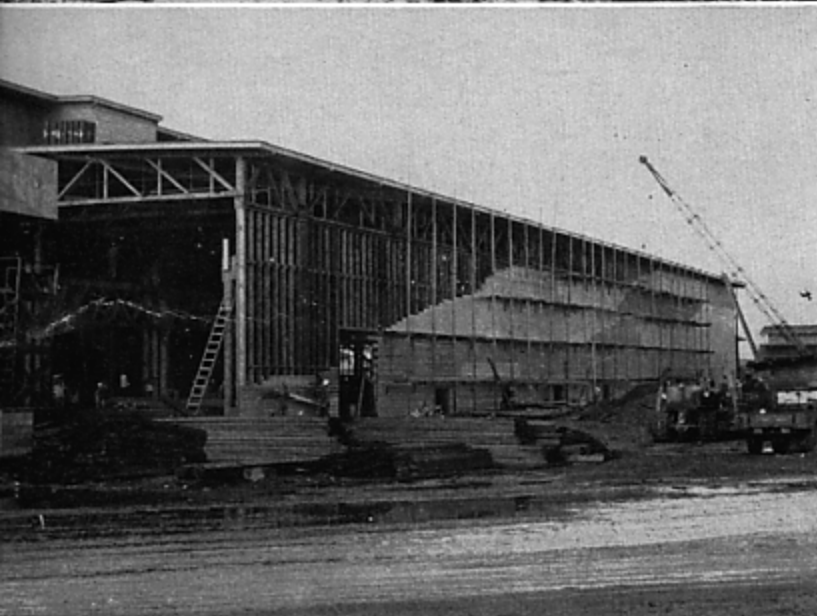
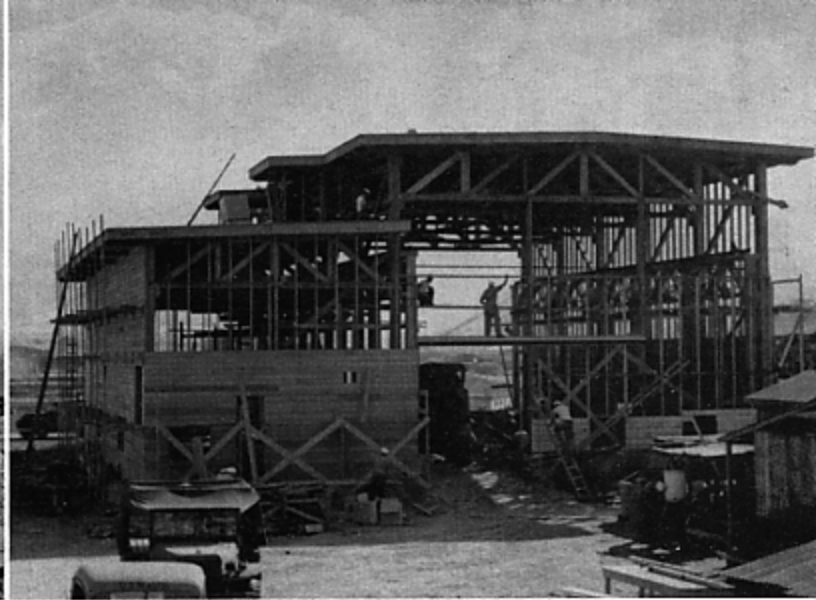
PROGRESS REPORT



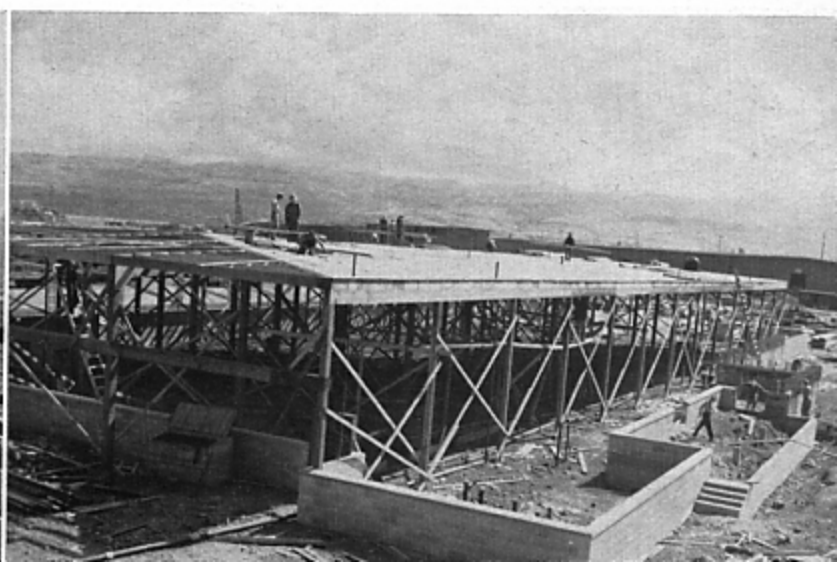


N O T I M E - A N D - A - H A L F





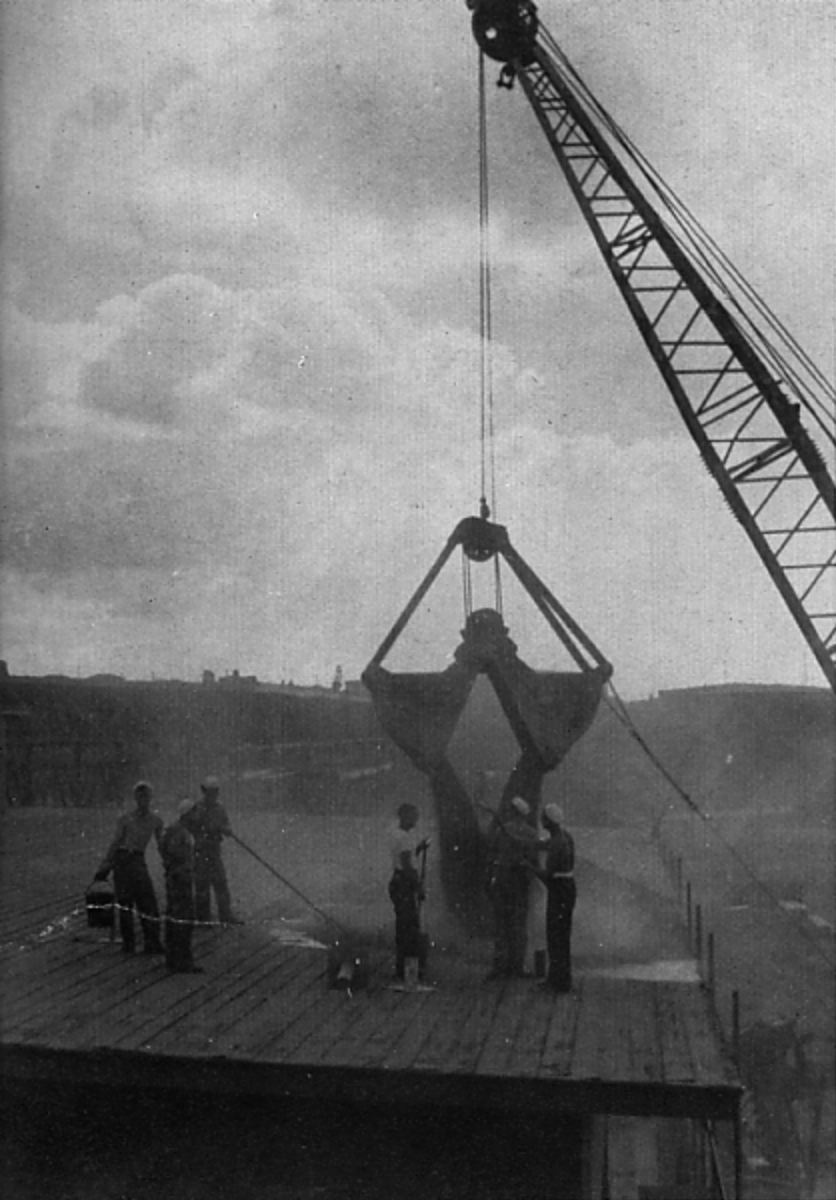
P L E N T Y O F O V E R T I M E



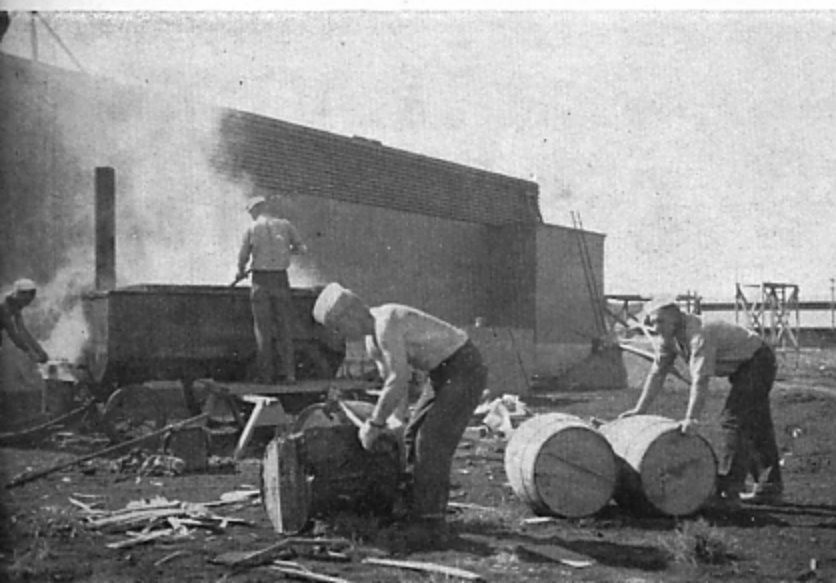


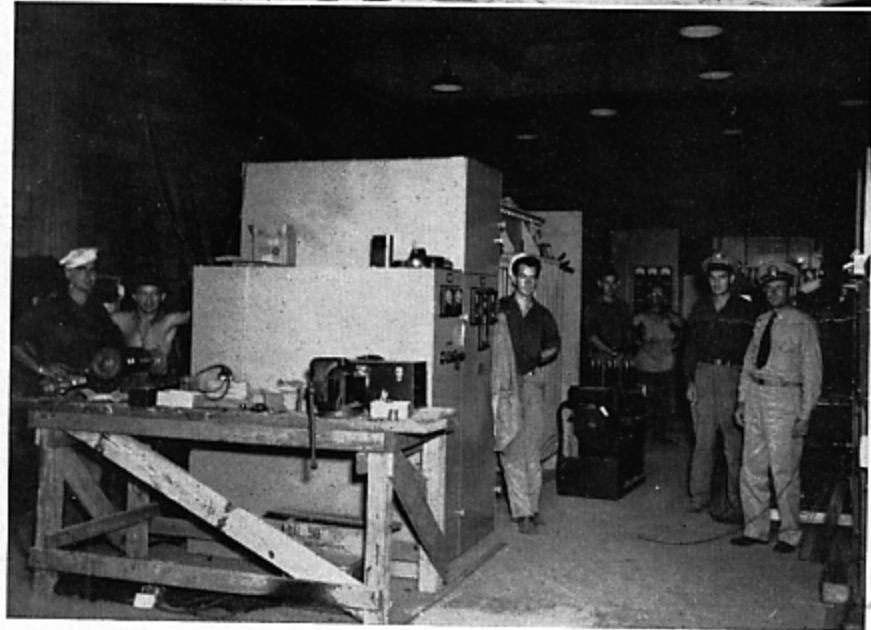
Y O U ' L L N E V E R G E T R I C H
B Y D I G G I N G A D I T C H





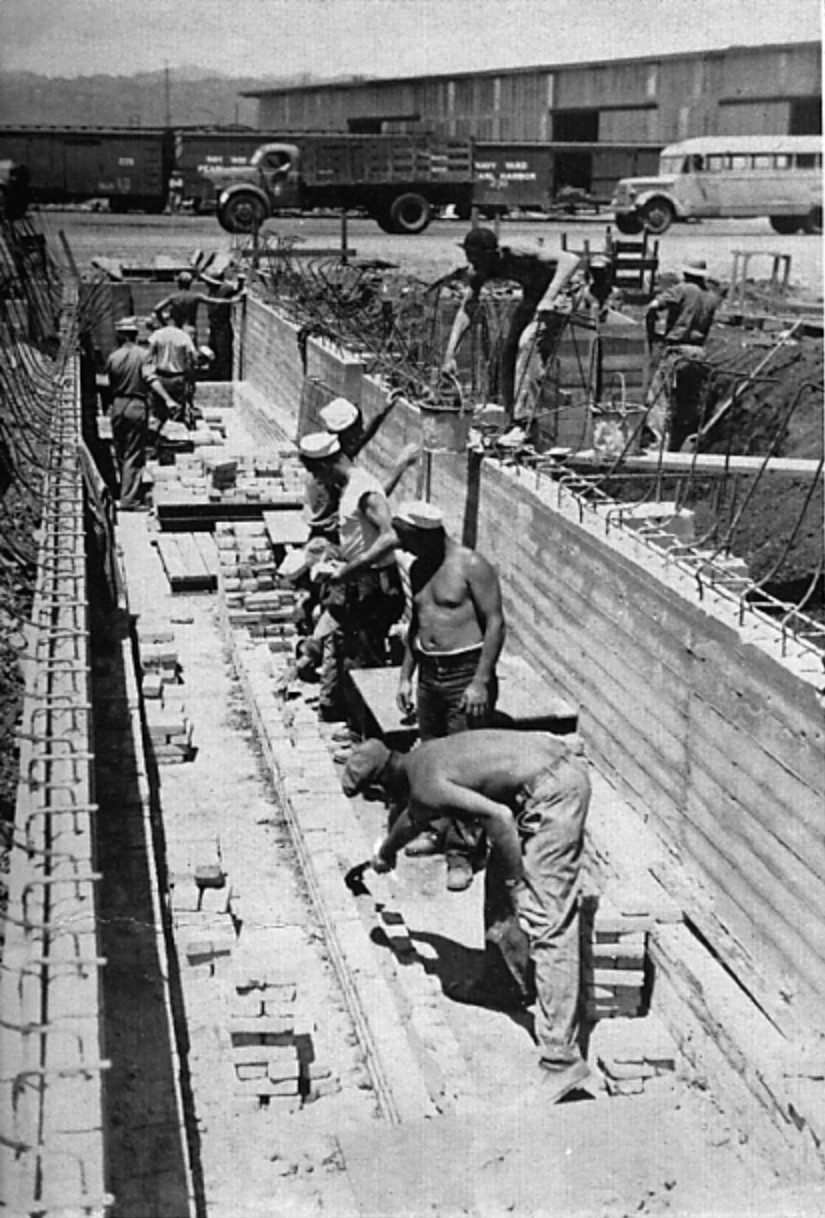
Y O U R S E A B E E ' S A
T A R B A B Y N O W



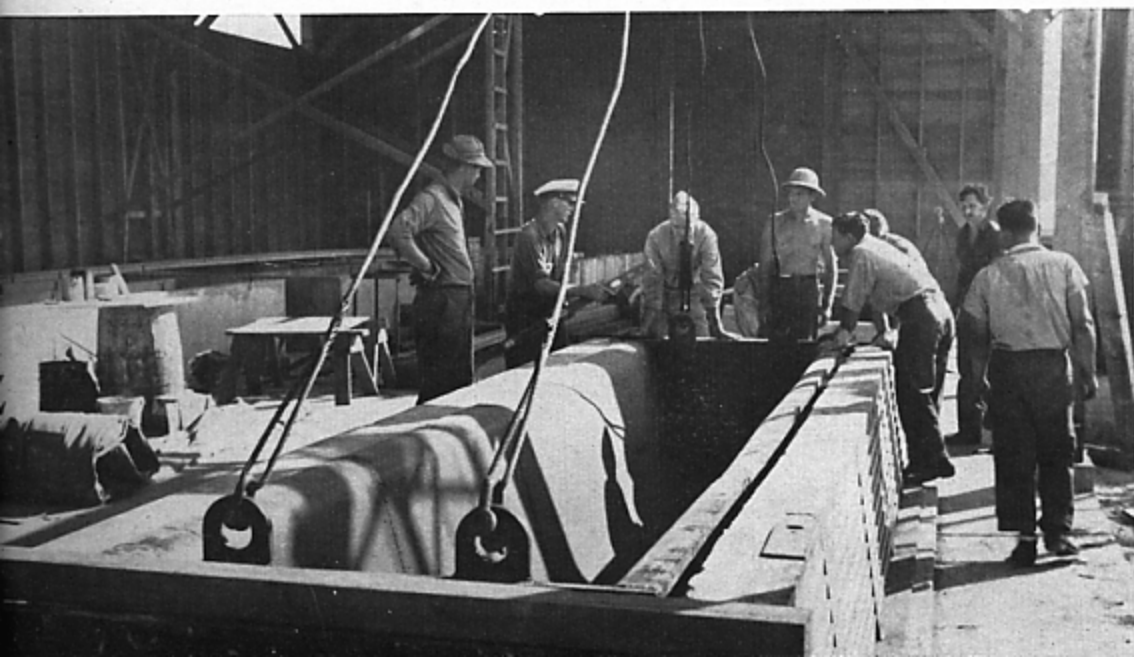


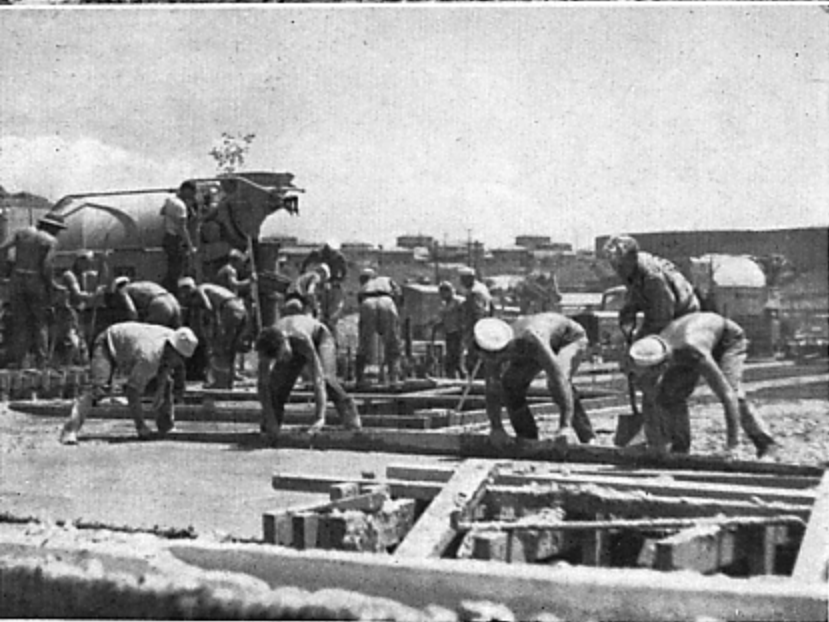
UNDERGROUND CABLES





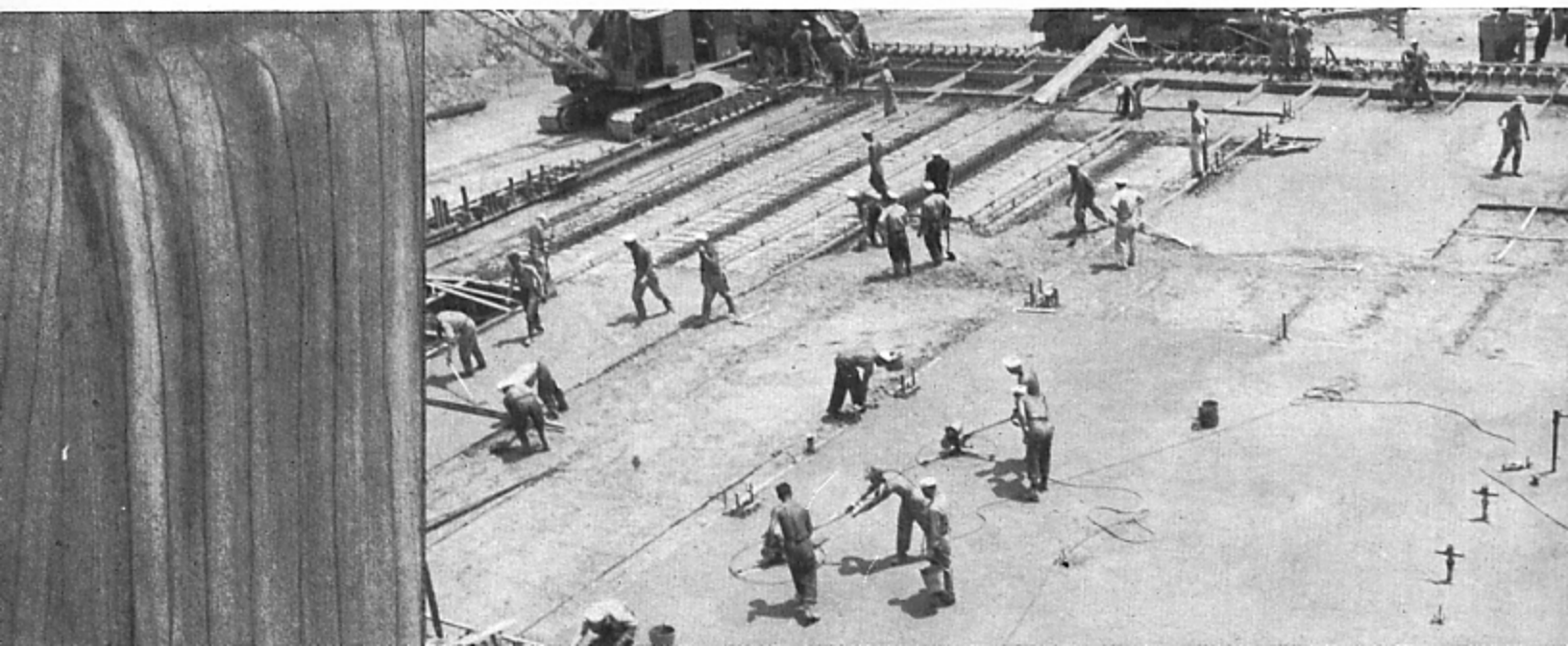
F O R U N D E R S E A F I G H T E R S

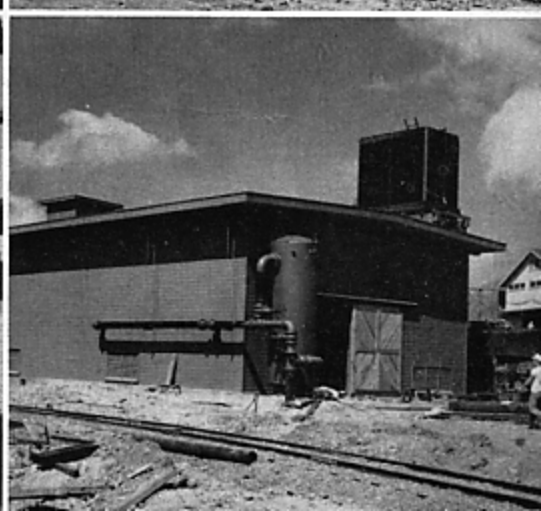
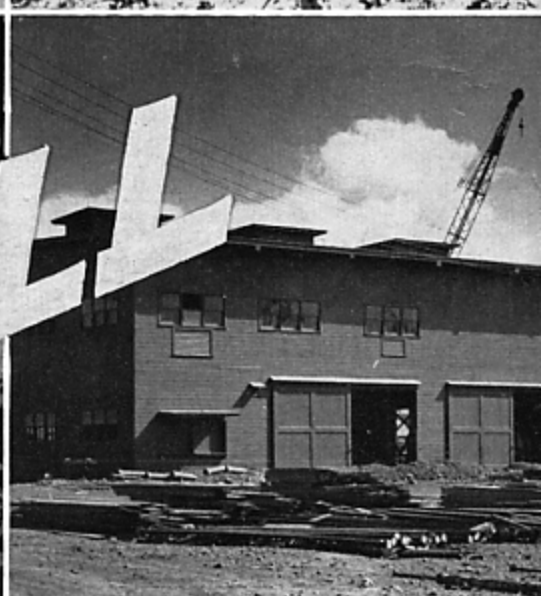
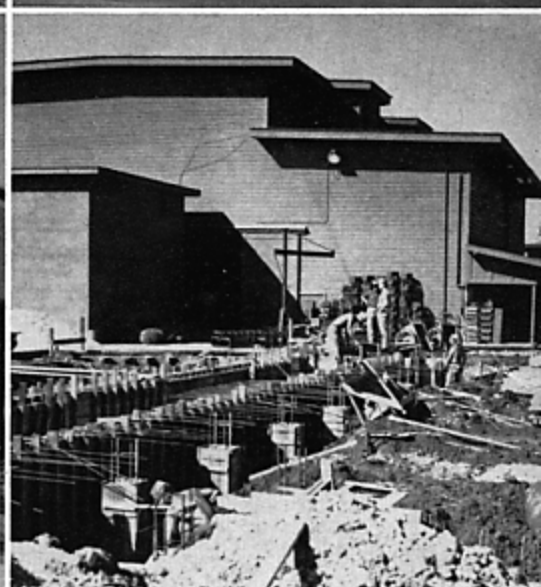
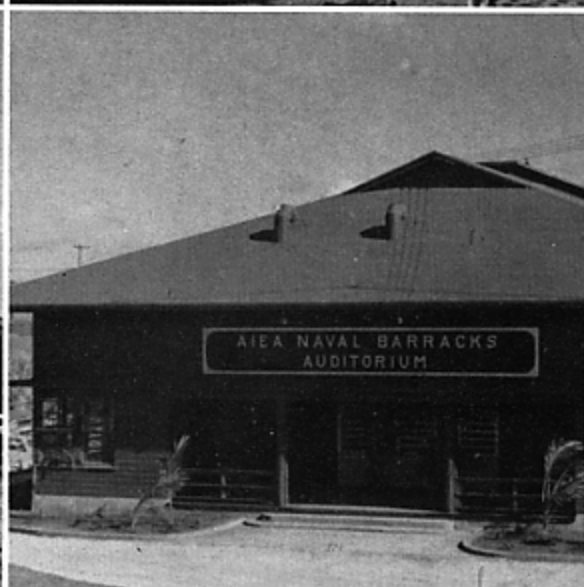
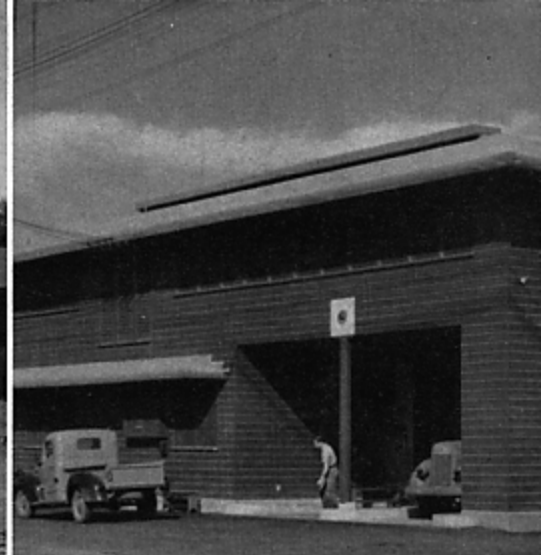


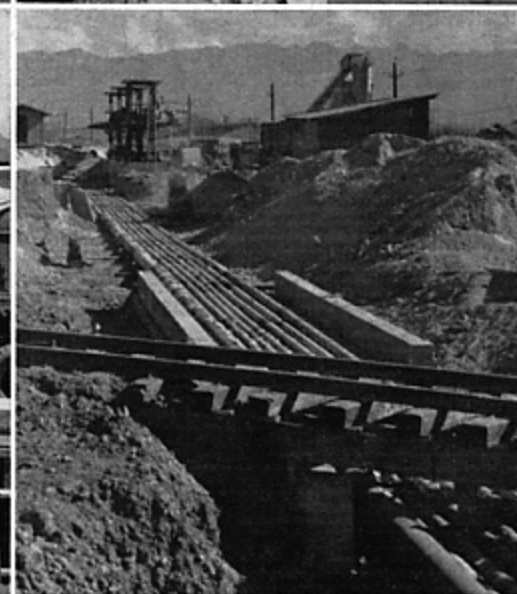
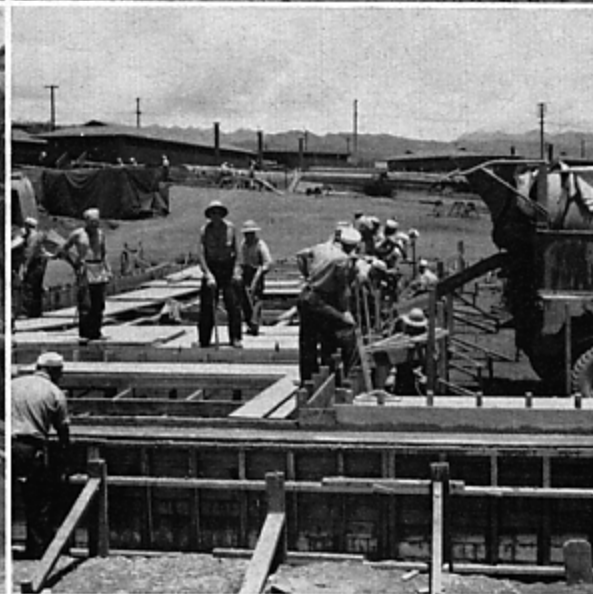
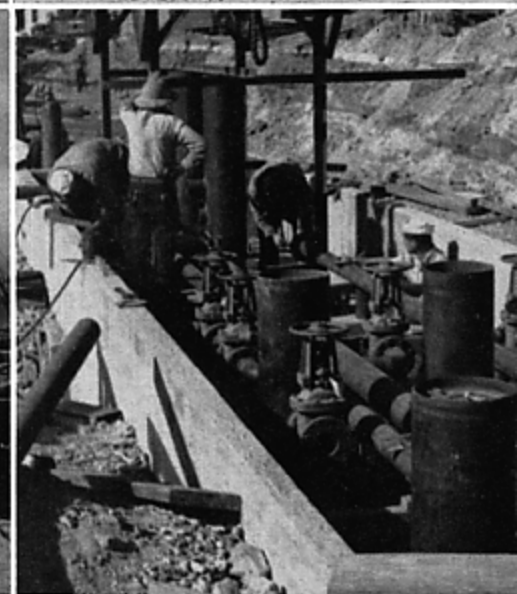
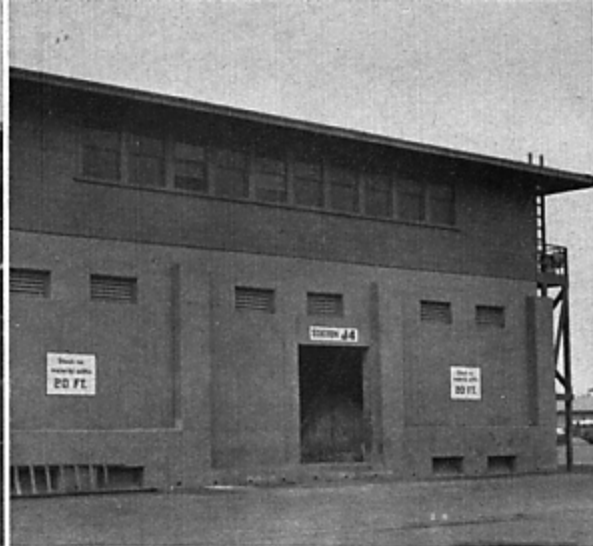
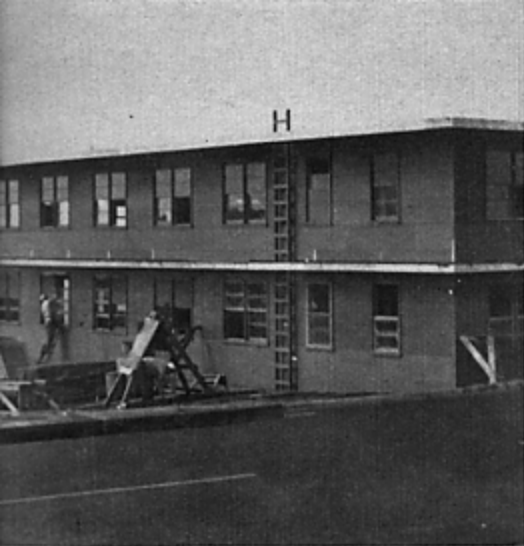


Piles are driven deep into the coral as a foundation for the Sub-base Machine shop through dredged fill—got support out of full lengths of piles . . . The steel crew puts finishing touches on their tying . . . The concrete finishers go to work . . . The monolithic slab pour is rushed to completion before the concrete sets.

I R O N M E N







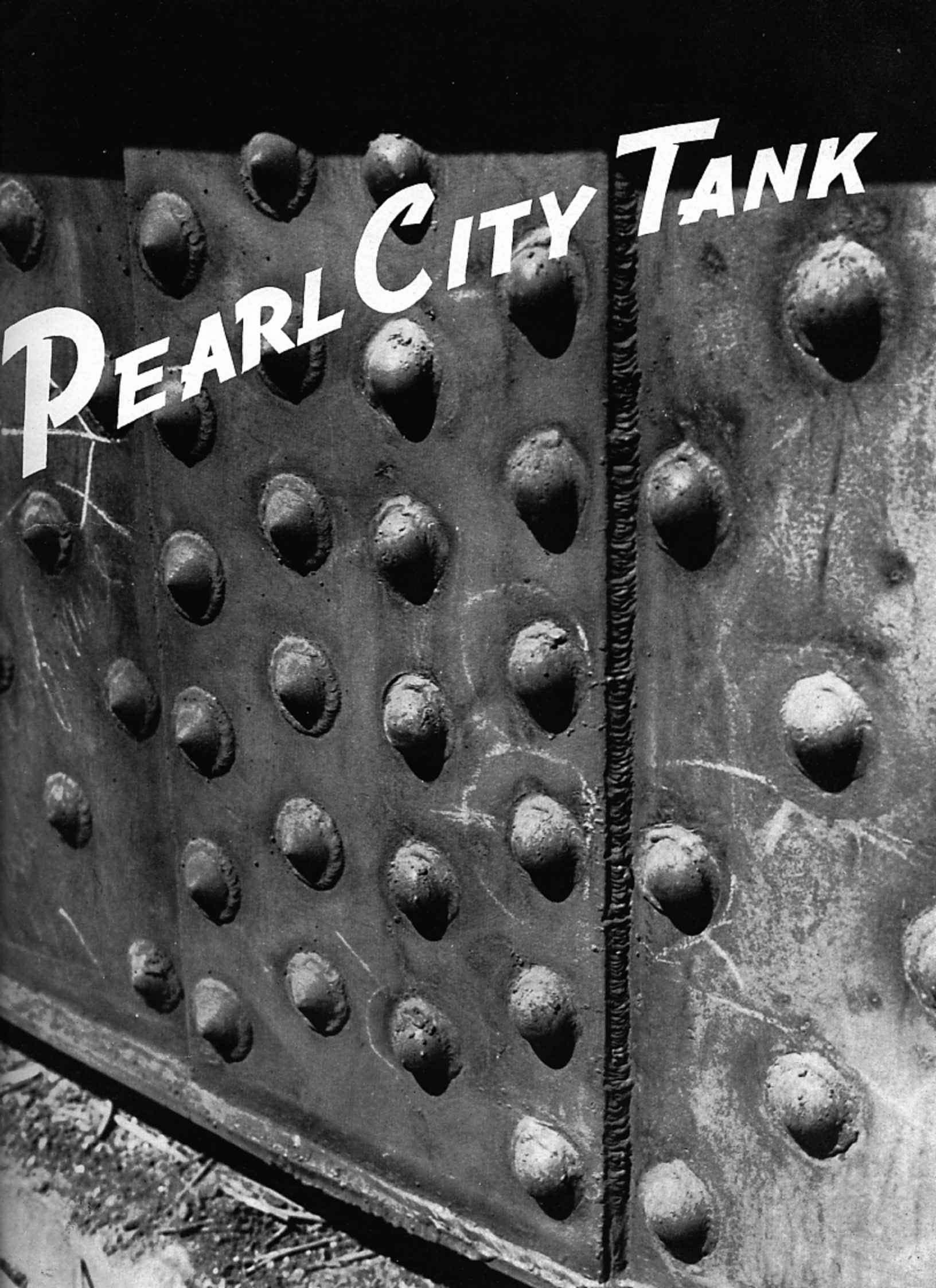


R U S H



J O B

PEARL CITY TANK





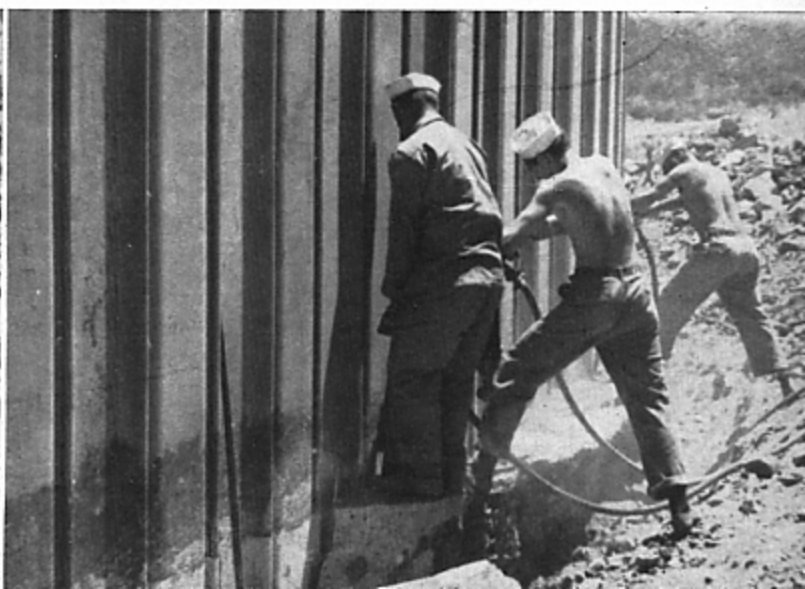
PILING PULLED -- TANKS DISMANTLED

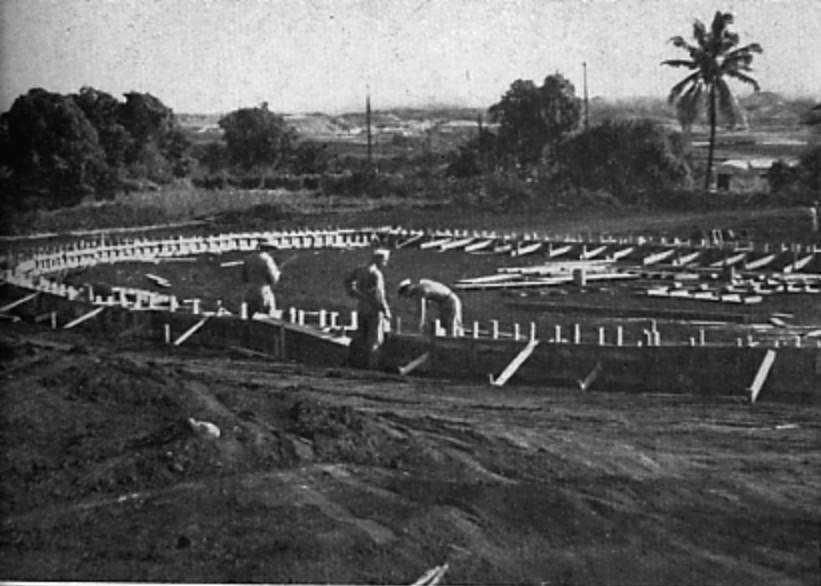
This was one of our dirtiest and most difficult projects. The piling had to be taken out intact, due to the urgent need of piling on outlying island bases. The base of the piling was embedded in concrete which had to be shattered away before the piling could be removed. Jackhammers were used in the beginning, but light charges

of dynamite were found more successful, after a little experimentation.

After the concrete was loosened, the piling was pulled by a crane with a 100-foot boom.

The tanks were dismantled after the piling was out, and trucked to the new site at Pearl City.





RE-ERECTION AT PEARL CITY BEGINS

Since the two tanks were formerly used for oil storage, it was necessary to sandblast each of the hundreds of plates in order that the tanks could handle aviation fuel. The all welded deck of the tanks was set on a six-inch cushion of sand. An eight-inch concrete foundation wall

was poured to support the tank walls and retain the sand foundation. The men on both day and night shifts deserve a great deal of credit for the outstanding work they did on this very important project.

